

depilève®

World's No.1 Wax!



Valid from 1 March 2026

WE ARE DEPILÈVE:

TRUSTED GLOBAL PIONEERS IN THE WORLD OF WAX

Some might say we are the OG of the hair removal industry. The G.O.A.T. The granddaddy.

Chances are you've seen us out and about – we're in salons from CapeCod to Cape Town, Blackpool to Buenos Aires. We've been around the block and know a thing or two about wax after more than 50 years in the biz.

With Depilève in the beauty cabin, our professional partners get results that are the envy of all. It's what makes us tick.

Never ones to sit still, this year we've got some shiny new goodies that will leave the competition eating your dust: hair-stop solutions, and a seemingly-magical lotion with the ability to minimise redness and discomfort... these are just some of the wonders.

Excited? Us too.

Let's get this party started.

WAX FOR ALL

Depilève celebrates diversity with waxes, skincare and treatments that embrace the uniqueness of each individual.

- EVERY GENDER
- ANY COMPLEXION
- ALL BODIES
- EVERY SKIN COLOR
- EACH HAIR TYPE

We aim to inspire people to look good and feel good in their own skin. Everybody is beautiful.

Did you know... over two thirds of Depilève management and employees are women.

Hair removal
Solutions for
Everybody...
And every
Body

THERAPISTS' FAVOURITE WAX FOR MORE THAN 50 YEARS

TRUSTED

We've been helping therapists and clients alike achieve perfectly smooth skin since 1972. Our formulas are developed in collaboration with our business partners across all five continents and our specialist training team provides expert education in product knowledge and technique, ensuring you always stay ahead of the curve.

GLOBAL

Depilève is a truly global brand, distributed in more than 130 countries worldwide. If you drew a line from Norway to South Africa, you'd find us in every country along the way. We also take our responsibility to the planet seriously. With the introduction of our bio-based plant resins in 2020, we are committed to more environmentally friendly and sustainable formulations in all our products.

PIONEERS

We are the original manufacturers of strip wax in cartridges and were the first company to introduce the concept of pre- and post-waxing cosmetics, waxceutical skincare and the world's first complete waxing system for barbers. As industry leaders and mavericks, we are constantly innovating; this enables us to anticipate the ever-evolving needs and wishes of salon clients and their technicians. We set the trends, we don't just follow them.



depilève®

WAXING

ACADEMY

The Depilève Waxing Academy is our in-house training platform for beauty professionals who want to learn the latest, most profitable and most efficient hair removal techniques out there.

Developed by our international team of waxing experts, we offer a comprehensive program that covers each area of the face and body. We have courses suitable for everyone, from complete beginner through to our advanced masterclasses for experienced technicians.

Workshops are delivered both in-person and online, making it easy to find a class that fits your needs and schedule.

With the best wax AND the best education, you'll be unbeatable!

● **BOOST YOUR INCOME AND CONFIDENCE**

● **DEVELOP SPEED AND EFFICIENCY, WITHOUT COMPROMISING RESULTS**

● **BECOME THE GO-TO WAXER IN YOUR TOWN**

● **HANDS-ON AND WEB-BASED COURSES AVAILABLE**

Our Program

We have developed 3 levels of training to set you apart from your competitors, whatever your current background or experience.

FOUNDATIONS

- **Introduction to film waxing**
- **Confident bikini waxing**
- **Facial waxing for female clients**
- **Facial waxing for male clients (Barbepil).**

MASTERCLASSES

- **Speed waxing** with strip and film wax
- **Female intimate waxing** (Brazilian and Hollywood)
- **Male intimate waxing**

EPILATION SKINCARE

- **Waxceutical**
Brightening and rejuvenating treatments for the face and body
- **Vajacial**
Ingrown hair, pigmentation and anti-aging treatments for the bikini



Film Wax



Monoï of Tahiti Film Wax

Monoï of Tahiti film wax-honey texture formulated for all skin types and sensitive areas. Easily applied in very thin and flexible layers. Dries quickly, minimizing the warm sensation on the skin. It adheres perfectly to the hair and not the skin.

400 g - R235
800 g - R355



Karité Film Wax

Special wax for very dry, rough, scaly, sensitive skin, with capillary fragility and a prone to eczema. Thanks to the Shea butter, it provides extra protection against excessive flaking. Comes in bead form as well for easy work and temperature control.

500 g - R235



Premium Cream Film Wax

Premium Cream wax with a superior grip of the hair and its extremely easy application makes this wax a classic of DEPILEVE, making it ideal for starting epilation with film waxes. Recommended for professionals who prefer traditional texture with the comfort and advantages of film wax.

500 g - R240



Intimate Film Wax

The leading signature Film Wax- Intimate- was the first 3G creation by making it low temperature, ultra-fine, quick-drying and no strips! Formulated with bio-based rosin that perfectly grasps the smallest hairs for a fast, effective, and gentle epilation, minimizing skin irritations. Suitable for all skin types.

800 g - R375

THIN APPLICATION LIKE STRIP WAX

a



Gold Black Carbon Bead Film Wax

Formulated with pure beeswax and activated carbon that provides emolliency, softness and helps absorb impurities in the skin. Very creamy and elastic texture that facilitates its application in a thin layer. It adheres very well to the hair, always respecting the skin, which makes it very suitable for male epilation. Comes in bead form for easy work and temperature control.

1 kg- R445



Barbepil Film Wax

An exclusive peelable wax for quick, comfortable removal of strong facial hair without the need for paper strips. Easy to use, even for technicians with no prior waxing experience. Its special formula ensures a secure grip on the hair while being extra gentle on the skin, to minimize irritation. Subtle masculine scent inspired by men's cologne, with notes of sandalwood and musk. Formulated with a bio-based resin, a renewable material that is suitable for very sensitive skins.

500 g- R190

b

THE REMOVAL IS WITHOUT STRIPS

c

EASY ECONOMICAL THIN APPLICATION THAT STAYS PLIABLE



Gold Film Wax

Advanced polymer film wax with smooth application, fast drying and high elasticity for breakage - free removal and gentle skin release. Suitable for all areas and skin types. Now in a bag with pourable seal for controlled, hygienic dispensing.

950g- TBC



Bush Tea Film Wax

Superior film wax formulated with organic resin, sunflower oil, and antioxidant-rich, rooibos extract. Its silky texture allows ultra-thin application with controlled, flexible removal. Ensures strong hair adhesion while enhancing skin comfort throughout the epilation process.

1 kg- TBC

Strip Wax



Natural Pine Rosin Wax

Formulated with bio-based pine rosin (vegetable origin), this wax is suitable for people looking for natural epilation that respectful to the skin and the environment. It is thin, and easy to apply with excellent grip on the hair.

400 g - R210
800 g - R325



Azulene Cream Rosin Wax

Thanks to its creamy formula with soothing and decongestant active ingredients, this wax is indicated for sensitive and reactive skin prone to itching and erythema.

400 g - R230
800 g - R355



Aloe Vera Rosin Wax

Aloe Vera with known soothing, moisturizing and regenerating properties is very refreshing and has a thin consistency. Applied and removed with ease. Ideal for sensitive skin, hot, dry climates and summer.

800 g - R335



Pearl Rosin Wax

Its superior grip on the hair as well as its extraordinary softness and creaminess make this wax a classic of DEPILEVE. Formulated with Titanium Dioxide that acts as a protective barrier between the hair and the skin, making the removal very smooth and soft with the skin.

800 g - R340



Crystal Marine Wax

The marine collagen firms and smoothes the skin whilst the rosin-free wax guarantees maximum effectiveness fine and short hair removal. It is made with hypoallergenic ingredients, making it suitable for people with an intolerance to rosin and for extra sensitive skin types.

800 g - R410

DISPOSABLE WAX THAT IS COST EFFECTIVE

a

FAST MELTING POINT WITH LIQUID CONSISTENCY WITH MAXIMUM USAGE AND FOR ALL SKIN TYPES

b

Natural Wax



Bio-based wax with oily texture made of only natural organic raw materials such as pine rosin and resin delivered from soy glycerin; for a more natural and respectful epilation.

100 ml- R47

Pink Wax



Pink Wax has Titanium Dioxide that provides an opaque, creamy consistency and has anti-inflammatory properties.

100 ml- R47

Crystal Marine Rosin-Free Wax



Crystal Marine is a non-colophony strip wax. Fluid in texture, specially formulated from mineral rosin, suitable for skins sensitive to colophony. Unscented crystal blue colour.

100 ml- R54

Aloe Vera Wax



Aloe Vera Extract gives a liquid/lily texture and provides moisture and freshness to the skin, excellent on skin prone to flaking and burning, powerful skin regenerator.

100 ml- R46

Bush Tea Wax



Wax with a smooth and creamy consistency that is easy to apply and, thanks to its star ingredient, the Rooibos extract; high antioxidant properties to soothe skin.

100 ml- R46

Bronze Wax



Characterized by its metallic bronze colour, this wax formula is oily texture and contains Salicylic Acid for quick, comfortable removal of male hair and Ginseng Oil that helps to revitalize and repair the skin.

100 ml- R49

Black Comfort Wax



Characterized by its elegant colour, this versatile wax with a creamy texture with maximum adherence to the hair and gentle on the skin.

100 ml- R47

Chocolate Wax



vitamin E, which acts as a powerful anti-oxidant, this is a creamy, emollient and moisturizing wax and its aroma produces a feeling of well-being.

100 ml- R47

Traditional Wax



Traditional Olive Bio Wax

Enriched with extra virgin Spanish olive oil, has regenerating and repairing properties. Rejuvenates skin, thanks to its high content of vitamin E, an antioxidant. Low melting point with an extremely elastic consistency.

1 kg- R340



Traditional Chlorophyll Bio Wax

Liquid formula with bio-based rosin for a superior grip on the shortest and toughest hairs, removing them without breakage. Excellent for tough areas.

1 kg- R375



Traditional Bush Tea Bio Wax

This unique traditional wax formula made with Rooibos extract, a mineral cocktail with zinc, natural beeswax and bio-based rosin makes it a one-of-a-kind wax. High in vitamin C, helps fight oxidative stress while improving anti-inflammatory properties. Luscious in texture, low in temperature and very effective hair removal.

1 kg- R385
1 kg beads - R385

SAME PERFECT FORMULA NOW IN NEW PACKAGING!



SAME PERFECT FORMULA NOW IN NEW PACKAGING!



SAME PERFECT FORMULA NOW IN NEW PACKAGING!



SAME PERFECT FORMULA NOW IN NEW PACKAGING!



FORMULAS ENRICHED WITH NATURAL BEESWAX

Traditional Pink Bio Wax

Luxurious creamy texture enriched with natural beeswax and Titanium Dioxide with excellent anti-inflammatory properties. Superior grip removing the hair from the root with no breakage. Ideal for all skin types. Made in bead form for easy pouring and storage.

1 kg- R355

Traditional Karité Bio Wax

Luscious creamy texture with bio-based rosin, natural beeswax, titanium dioxide and shea butter. Shea butter softens the wax making it pliable and easily peelable. Ideal for all skin types with comfort for even sensitive skins and the toughest hair. Packed in beads for easy pouring and temperature control.

1 kg- R390

Traditional Azulene Bio Wax

Superior creamy texture with bio-based rosin, natural beeswax, titanium dioxide and guaiaulene. Guaiaulene has anti-inflammatory properties making it ideal for many skin types. Removes the toughest hair yet sensitive and delicate during removal. Packed in beads for easy pouring and temperature control.

1 kg- R385

COMES IN CONVENIENT TRAYS OR BEADS FOR FAST MELTING

a

CREAMY TEXTURE FOR A SMOOTH APPLICATION

b

BIO-BASED PLANT RESIN THAT IS FRIENDLY ON THE SKIN AND ENVIRONMENT

c



Pre-Waxing



Dermobalance

Dermobalance is designed to refresh, balance, and soothe the skin. With an **Aloe Vera Water** and **Menthol** base, it provides a cooling sensation, helping to reduce redness and leaving the skin soft, clean, and perfectly prepared for wax application.

200 ml - R173



Pre Base

Pre Base Gel is made from Aloe Vera, Glycerin, Menthol, Camphor, and Witch Hazel enhance wax adhesion to the skin while providing freshness, hydration, and a toning effect that optimizes results.

200 ml - R190
500 ml - R290



Pre Waxing Oil

Pre Waxing Oil creates a thin film that minimizes the sensation of heat and facilitates hair removal without irritating the epidermis. Enriched with **Aloe Vera**, **Vitamin E**, and **Bisabolol** providing softness, elasticity, and comfort.

200 ml - R186



Skin prep

This pre-wax spray lotion cleanses and prepares the skin for waxing. Apply with cotton pads to the treatment area and blot any excess moisture with a tissue. Eliminate traces of excess oil, creams and perspiration. Primes the skin and hair to improve wax adherence and make for more efficient hair removal.

220 ml - R190

Post-Waxing



Oil Cleanser

A gentle cleansing oil that effectively removes wax residues while soothing, hydrating, and protecting the skin. Enriched with **Aloe Vera**, **Vitamin E**, and **Guaiazulene**. Used to reduce redness and inflammation.

200 ml - R195
350 ml - R320



Milk Cleanser

Aloe Vera and **Vitamin E**. **ALOE MILK CLEANSER** combines the purity of **Aloe Vera** nectar with the nourishing power of Vitamin Deeply cleanses the skin and effectively removes impurities and wax residues.

200 ml - R165
500 ml - R280



Soothing Cream

Aloe Soothing Cream is a velvety, enveloping cream that combines the benefits of **Aloe Vera**, **Shea Butter**, **Tapioca**, **Allantoin**, and **Chamomile** Extract to provide a soothing, nourishing, and protective barrier.

200 ml - R205



Skin Protect

A soothing cream to hydrate and protect the skin after waxing. Contains vitamin E and extracts of butcher's broom, beech bud, oats and brown algae to reduce inflammation, revitalise the skin, moisturize and restore comfort after waxing. Guards against sun damage with SPF15.

(Professional / Retail)
125 ml - R335

Treatments



Folisan

1. Formulated with Salicylic acid, **FOLISAN** is the most effective treatment to prevent ingrown hairs and treat infection and inflammation of the follicles as a result of hair removal either by epilation or shaving.

1. 150 ml - R300



Folimousse

Dual purpose mousse, effectively weakens hair growth and produces a refreshing and relaxing feeling on heavy and tired legs. This product is ideal for home use.

(Professional / Retail)

190 ml - R295



Foliclear

A soothing cream to hydrate. Recommended for use after waxing all areas of the face and body, this multi-functional serum can be used in the salon and at home to calm redness, tackle pimples and combat ingrown hairs.

(Professional / Retail)

125 ml - R285

Wax Warmers



Wax Warmer

Elegant, robust and practical wax warmer with an adjustable thermostat. 400g and 800g inserts sold separately.

400 g- R1650
800 g- R1800



Black Wax Warmer

Elegant Black, robust and practical wax warmer with an adjustable thermostat. 400g and 800g inserts sold separately.

400 g- R1800
800 g- R2000



Single Universal Cartridge Warmer with Base

Depilève 100ml single universal cartridge warmer with a sturdy skid-free base. Ideal for professionals that require multiple heating units. Includes an independent on/off switch with indicator light, no-skid base, patented connection design.

Single- R1350



Duo Universal Cartridge Warmer with Base

Dual Cartridge warmer that is fast melting and sturdy for 12- hour daily use. Includes an independent on/off switch with indicator light, no-skid base, patented connection design and with side electrical connectors to join multiple units with only one electrical plug.

Duo- R2150

Waxing Accessories



Duo Connector

Unite your Depilève warmers so they look like one professional unit. Sold 2 per pack

2 pc- R185



Empty Tin

Depilève branded empty tin, to use multiple waxes.

400 g- R58
800 g- R65



Wax Warmer Insert

Use in wax warmer to protect warmer and interchange waxes.

400 g- R213
800 g- R233



Easy Clean

"DO NOT USE ON SKIN"

Citrus scented aromatic cleaner essential for the removal of wax from warmers, trolleys, floor and counter tops. Leaves room with a pleasant citrus fragrance.

220 ml- R220
1 L- R415



Collar Ring

Protect your warmer during epilation from wax drippings and speed up the daily cleaning process

400 g- R102
800 g- R110

50 pieces per pack



Wax-Can Holder

Dual purpose stainless steel bar that serves to scrape excess wax from the spatula and easily remove the can when finished to avoid burning.

Single- R87



Wax Warmer Silicone Insert

Heat-resistant, flexible and easy to clean. Takes up to 400g of wax. Fits 400g and 800g wax warmers.

400 g- R180

Waxing Accessories



100's Body Strips

Resistant 100gsm non-woven strip that adheres perfectly to the wax with minimal wax saturation.

- Pack of 100 strips
- 20 x 7 cm
- 100gsm

R90



Epilation Roll

Continuous roll of 100gsm woven waxing strips. Helps optimise usage and adjust length of strips depending on the areas of the body to be waxed.

- 100m x 70mm
- 100gsm

R250



Ear Guards

Shaped perfectly to fit around the area for precise ear waxing. Protects ears.

Bag of 50 pieces

R80



Depilève Beauty Organizer

Sturdy acrylic holder that has different compartments to hold all Depilève spatula sizes and tweezers for easy access.

R275



Depil XL Body Applicators

Manufactured in flexible and resistant birchwood. Extra long and extra wide for application of more wax and cover a wider area, saving time in dipping and application.

17 cm x 1,8 cm x 2mm.
Bag of 100 pieces

R92



Facial Applicators

Small spatulas specially designed for facial waxing. Their polished surface enables an extra gentle and precise application of wax.

Bag of 100 pieces.
14 cm x 0,7 cm x 2 mm

R64



Precision Applicators

Revolutionary design for precise application of wax for face, lip and eye - brow waxing. The slanted edge side allows to sculpt the wax exactly in the desired area, preventing overflow of wax to unwanted areas.

10,6 cm x 1cm x 2 mm / 4 cm x 0,7 cm x 2 mm
Bag of 100 pieces

R85



Perforated Stainless Steel Tweezers

Stainless Steel easy to use tweezers with slanted grip.

R195



Ergonomic Tweezers

Ergonomic tweezer which perfectly fits in the hand. Ideal to grip all type of hairs, even the shortest

R195



Narrow Tweezers

Made of surgical hypoallergenic stainless steel and polished diamond grip for precise grip of all hairs. With protective case.

R205

Paraffin



Deep Moisturizing Peach Paraffin

A delicate peach scented paraffin - enriched with avocado oil, rich in vitamins D and E, and Monoi of Tahiti oil. This Paraffin is highly moisturizing and nourishing, providing elasticity and softness to the skin.

2.8 kg - R710

350 g - R95



Antioxidant Lavender Essential Oil Paraffin

This therapeutic paraffin is based on the purifying and soothing properties of lavender essential oils. Enriched with hemp oil, which hydrates, nourishes and regenerates, as well as the grape seed oil, which is one of the most powerful antioxidants.

2.8 kg - R740

350 g - R100



Energizing Tea Tree Oil Paraffin

Tea Tree oil has great antiseptic properties and protects as well as refreshes the feet. The ginger and thyme essential oils provides an energizing effect, while stimulating blood circulation. This Paraffin is hydrating and great for tired, heavy legs and feet.

2.8 kg - R740

350 g - R100



Paraffin Soft Cream

Paraffin cream easily applied on hands and feet. Wrap with Osmotic film and use electric heated mittens or booties. Also great for clients that are heat sensitive or during summer when it is too hot for traditional paraffin treatment.

450 ml - R330



Cosmetics



Dermospray

Antiseptic cleanser effectively cleanses hands and feet before the paraffin treatment.

200 ml- R168



Dermopeel

Exfoliating gel-cream with Jojoba spheres. Preps the skin to optimize active ingredient absorption and hydration.

200 ml- R325



Collagen Elastin Plus

Non-greasy luscious emulsion, enriched with collagen and elastin, for anti-ageing and deep moisturization. Keeps skin soft and supple. Apply before paraffin treatment and recommend it to your clients for home use.

500 ml- R295



Paraffin Warmers



Facial Paraffin Warmer

Professional Warmer with an adjustable thermostat. The safety thermostat prevents overheating. Plastic lid is crack resistant.

400 g - R1650



Professional Paraffin Warmer

Large 3 kg lightweight warmer with deep tank. The tub is built in plastic for extra safety with wrap around heating element and electronic thermostat to maintain precise temperature control. Transparent lid allows to supervise paraffin level and meltdown. Ergonomic design to easily move around.

R3800



Paraffin Accessories



Facial Gauze Mask

Pre-cut: 100% sterile gauze. Holds paraffin and adds body to paraffin mask for easy removal as one piece. 50 per pack.

R178



*RECYCLABLE

Disposable Liners

These plastic liners avoid the contact of paraffin with mittens or booties and properly dispose of paraffin after each treatment. 100 Units Box.

100pc - R255



Lined Mittens

MANICURE - Terry velour lined mittens with velcro closure to maximize heat retention during the paraffin treatment. 1 pair

R300



Lined Booties

PEDICURE - Terry velour lined booties with velcro closure to maximize heat retention. 1 pair

R300

a MOISTURIZING AND HYDRATION AT THE HIGHEST LEVEL FOR THE SKIN ON THE HANDS, FEET AND FACE

b THERAPEUTIC WARM TREATMENT THAT DEEPLY MOISTURIZES FOR A RELAXING FEELING OF WELL BEING

c DEPILÈVE COSMETICS BOOST HYDRATION DURING THE TREATMENT AS WELL AS DURING HOME CARE

Waxceutical

WHAT IS WAXCEUTICAL?

An effective skin solution. Cosmetic waxing services and Vajacial Treatments that target specific skin concerns.



Glycopeel

A skin peel with AHA's to brighten, smooth and promote cell regeneration. Works best on textured, rough skin!

10 x 5 ml - R355



O2 Bubble Mask

A purifying and refreshing bubbling mask that oxygenates to improve skin condition and skin health.

10 x 3 ml - R330

Soft & Bright



Film Wax

An extraordinary creamy textured film wax that contains inhibitors of melanin production. Perfect, luminous skin, completely free of irritation and blemishes even in the most delicate areas.

500 g - R285



Roll-on Wax

A brightening strip wax with a creamy texture, that allows an effective epilation, even with the most stubborn hair.

100 ml - R49



Clarifying Serum

Formulated with plant-extracts Gatuline Spot Light & Citrus Unshiu to target hyper-pigmented areas.

(Professional & Retail)

100 ml - R285



Clarifying Lotion

Face & body lotion formulated with Gatuline Spot Light, enriched with Shea Butter to provide & hydration for silky-soft skin.

(Professional & Retail)

200 ml - R315

DNA



Film Wax

Allows for skin rejuvenation & gentle hair removal simultaneously. Contains actives which respect maturing skin & help restore skin youthfulness. The wax changes colour when ready to remove!

800 ml - R415
400 ml - R255



Rejuvenating Serum

Formulated with anti-ageing ingredients suitable for the face & body areas. Combats loss of firmness, fine lines & dry, dehydrated skin.

(Professional & Retail)

100 ml - R285



Thermo Mask

An occlusive thermal mask with added moisturizing agents and mica to offer deep hydration, improving the skin's radiance and encouraging penetration of active ingredients for visible, lasting results.

400 ml - R290

VAJACIAL

Intimate Skincare Treatments

It is a cosmetic procedure that improves the skin of the intimate area by targeting common concerns such as ingrown hair, hyperpigmentation, and poor skin elasticity

THE DEPILEVE DIFFERENCE

- The only complete professional Vajacial range available in South Africa.
- A variety of areas can be treated.
- A comprehensive range of products that allow for a targeted approach to ageing and pigmentation.
- Safe to use on all body areas.
- Can be performed immediately after a waxing service.

Retail Products



Folisan

Formulated with Salicylic acid, FOLISAN is the most effective treatment to prevent ingrown hairs and treat infection and inflammation of the follicles as a result of hair removal either by epilation or shaving.

150 ml- R300



Foliserum

An ultra-hydrating serum formulated specifically with Salicylic Acid to prevent ingrown hair formation after epilation. Enriched with Coenzyme Q-10 and Ceramides to deeply moisturize while preventing pimple formation.

50 ml- R380
6x 50 ml- R2160



Folimousse

This formula is based on a phyto-bioactive complex of combined actions that provides a limiting effect on the growth of body hair. It is very soft and light in texture and refreshes the skin; decongesting the skin after epilation while helping to eliminate wax residues.

190 ml- R295



Skin Protect

A soothing cream to hydrate and protect the skin after waxing. Contains vitamin E and extracts of butcher's broom, beech bud, oats and brown algae to reduce inflammation, revitalise the skin, moisturize and restore comfort after waxing. Guards against sun damage with SPF15.

125 ml- R335



Intimate Folisan

Salicylic acid in its highest concentration for intimate application to treat ingrown hairs and follicle irritation. A roller ball dispenser enables targeted and easy application.

6x 15 ml- R750



Folisan Man

An at-home treatment for ingrown hairs and folliculitis. Contains salicylic acid to both prevent and treat ingrown hairs, inflammation and infection of the follicles after hair removal. Gently exfoliates the skin to allow new hair to break through.

6x 10 ml- R530



Foliclear

A soothing cream to hydrate. Recommended for use after waxing all areas of the face and body, this multi-functional serum can be used in the salon and at home to calm redness, tackle pimples and combat ingrown hairs.

125 ml - R285

a

ASSIST IN TARGETING INGROWN AND INFLAMED HAIR

b

EXFOLIATION THAT LEAVES THE SKIN SILKY SMOOTH BEFORE AND AFTER EPILATION.

c

INHIBITS HAIR GROWTH FOR EXTENDED TIME DURING EPILATION

MERCHANDISING & WAXING KITS AVAILABLE!



Folifree Treatment

NON-LASER HAIR REMOVAL

Introducing a groundbreaking hair removal solution that doesn't rely on laser technology. This natural and revolutionary system delivers outstanding permanent results comparable to laser without any of the associated limitations.

This professional product is designed to be used in a spa setting following waxing, sugaring, threading, or tweezing. It consists of two serums that work on the empty anagen follicle, offering a modality that is completely different from laser, IPL, or electrolysis. With Folifree, hair colour is not a factor as it is effective on all Fitzpatrick phototypes and hair colours. What's more, there is no chance of pigmentation or damage.

Folifree is formulated using natural herbs, without the use of chemicals, that work synergistically to create a mechanism that targets the new hair cell at the base of the empty anagen follicle, preventing the duplication of cells. By inhibiting energy to the mitochondria, treated follicles become inactive within 6 hours.

1



FOLICLE
ACTIVATOR

Foliprime

A Folicle dialator formulated with natural extracts and enriched with ginger oil promotes increased capillary flow, dilating pores up to 4 times their natural size, resulting in a significant increase in Folifree Serum absorption.

200 ml - R1150
50 ml - R315

2



HAIR STOP
SERUM

Folifree

Hair inhibitor serum with natural plant extracts that progressively retard and inhibit hair growth. It is formulated using natural herbs that work synergistically to create a mechanism that targets the new hair cell at the base of the empty anagen follicle.

200 ml - R1300
50 ml - R340

BENEFITS AND KEY POINTS

Reduces hair up to 85 %

Permanent results

Natural and revolutionary system.

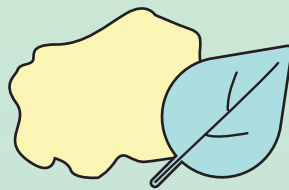
Non-laser hair removal system

This non-laser hair removal system is permanent and can reduce hair up to 85%. Your treatment schedule will be determined by a professional and will require regular intervals of three weeks. The reduction in hair happens over time as the anagen phase hair cycles in. While most people will require between 8 and 12 treatments, individuals with hormonal issues may need more to achieve optimal results.

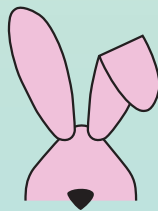
Gentle on you, **gentle on the planet**



ENVIRONMENTALLY FRIENDLY



BIO-BASED



WE LOVE ANIMALS

depilève®

Wax for all!



@depilève_southafrica
www.depilève.co.za

Thanks



011 468 2331

<https://salonsuppliers.co.za>

**Prices subject to change without prior notice.*